

# SAMPLE TEST GATE B – GRADES 6 – 7

Student Name \_\_\_\_\_

1. Which of the following notes is named **incorrectly**?

A musical staff with a treble clef and a brace on the left. It contains four notes: F (first space), A (second space), B (third space), and E (fourth space).

- a. F                      b. A                      c. B                      d. E

2. Put an X on the key that is the correct pitch written on the staff.

A musical staff with a treble clef. A note is written on the top line, labeled "15<sup>ma</sup>".



3. Which of the following intervals is labeled **correctly**?

A musical staff with a bass clef showing a half note G and a quarter note F.

A musical staff with a treble clef showing a half note G and a half note E.

A musical staff with a bass clef showing a half note G and a half note E#.

A musical staff with a treble clef showing a half note G and a half note C.

- a. P2                      b. m6                      c. M6                      d. M4

4. What is the key signature of the **parallel minor** of F Major?

A musical staff with a treble clef and one flat (Bb).

A musical staff with a treble clef and three flats (Bb, Eb, Ab).

A musical staff with a treble clef and three sharps (F#, C#, G#).

A musical staff with a treble clef and two sharps (F#, C#).

- a.                      b.                      c.                      d.

5. Which of these is a half step?

A musical staff with four intervals: a. G to A, b. G to Ab, c. G to A, and d. G to F.

- a.                      b.                      c.                      d.

6. In  $\frac{2}{4}$  time, an eighth note gets how many counts, or beats?

- a. one                      b. one-half                      c. one and a half                      d. three

7. Which rest is needed to complete the measure?



- a. b. c. d. none of these

8. In this rhythmic example, on what beat or count is the eighth rest?

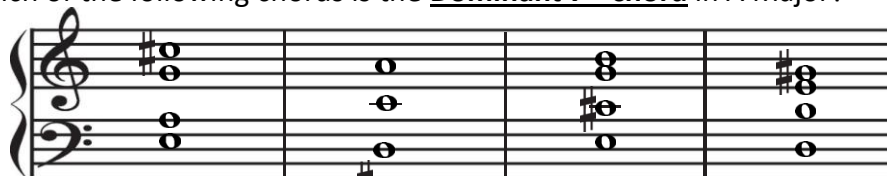


- a. beat 1 b. beat 2 c. beat 3 d. the "and" after beat 1

9. Another name for cut time is:

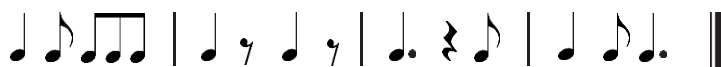
- a. two time b. double time c. half time d. alla breve

10. Which of the following chords is the **Dominant 7<sup>th</sup> chord** in A Major?



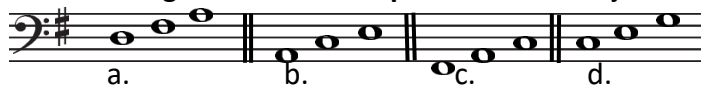
- a. b. c. d.

11. Circle the correct time signature for this rhythmic phrase.



- a.  $\frac{2}{4}$  b.  $\frac{3}{4}$  c.  $\frac{6}{8}$  d. none of these

12. Which of the following chords is the **Supertonic** of G Major?



- a. b. c. d.

13. Which of the following triads is the **Dominant** of f# minor?



- a. b. c. d.

14. Which dynamics are listed from **loudest to softest**?

- a. *f mf p mp* b. *ff mf f mp* c. *f mf pp mp* d. *ff mf p pp*

Use this musical example to answer the next four questions.



In what key is the piece written?

- a. G Major                      b. d minor                      c. D Major                      d. b minor

15. The first two notes of the example are known as:

- a. anticipation              b. appoggiatura              c. anacrusis              d. arco

16. In what measure are there staccato notes?

- a. the first                      b. the second                      c. the third                      d. the fourth

17. What do the curved lines under the notes indicate?

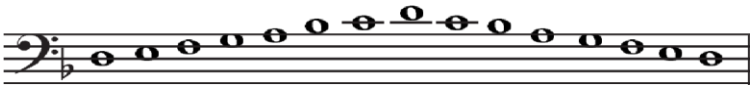
- a. play louder    b. connect the notes    c. separate the notes    d. hold back

18. Which of the following is a natural minor scale?



a.

b.



c.

d.

20. What is the key signature for *Bb* Major?



a.

b.

c.

d.

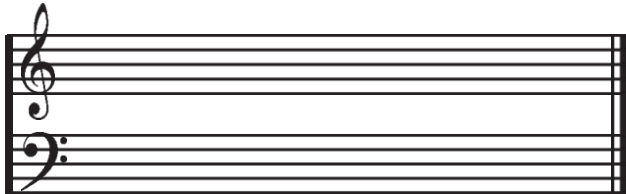
21. What is the relative Major key to c minor?

- a. Eb                      b. Bb                      c. C                      d. A

Use this musical example to answer the next three questions.



22. What is the name of the chord in measure two?
- a. G dim.      b. G Aug.      c. B min.      d. B Maj.
23. What type of ornament is in measure three?
- a. trill      b. tremolo      c. passing tone      d. mordent
24. What is the function of the dot in measure four?
- a. it doubles the note value      b. it acts the same as a fermata
- c. it adds ½ the value of the note before      d. none of these
25. What compositional style is used in a 2-part Invention?
- a. syncopation      b. Alberti Bass      c. contrary motion      d. counterpoint
26. On the staff below, write the order of sharps in both clefs.



27. Which of the following time signatures is **not** *simple meter*?
- a.  $\frac{5}{4}$       b.  $\frac{3}{8}$       c.  $\frac{3}{2}$       d.  $\frac{2}{4}$
28. If you were to transpose a melody from the original key of E Major, down a minor 3<sup>rd</sup>, what is the new key?
- a. c# minor      b. C# Major      c. C Major      d. c minor
29. What is the term that refers to the note that receives one beat in a measure?
- a. beat unit      b. cadence      c. tenuto      d. motive
30. Which of the following terms means the **opposite** of *gradually faster*?
- a. piu mosso      b. ritardando      c. accelerando      d. animato